



Friday 9th February, 2024

### Head Teacher's Weekly Update

Dear Families,

I would like to wish you all a lovely half term break and thank you once again for your ongoing support over our first half term of 2024. It has been a short term in comparison to the Autumn term but it has been packed full of so many learning opportunities and moments of reflection for us as a school. We are grateful for your positive messages and prayers as we aim to support every pupil in our care to reach their full potential. Please see further information regarding the forthcoming season of Lent which begins during the holiday.

### Prayer Theme

***"And he saith to them: Let us go into the neighbouring towns and cities, that I may preach there also; for to this purpose I have come" - Mark 1: 29 - 39.***

- We have prayed together as a community:

**Dear God,**

You asked the disciples to give up everything for you, so that you could fulfil your plans of helping everyone. We ask that you help us understand and carry out the plan you have for us to serve both you and others.

**Amen**

### Lent

- Lent begins next Wednesday 14th February, Ash Wednesday.
- Please find a link below to a number of resources and links to services across the Diocese.
- I would encourage you and your family to begin the season of Lent marking the solemn day of Fasting and Abstinence and the wearing of ashes on the forehead.
- When we return to school on Monday 19th February we will begin a week of Lent Assemblies reflecting on the Gospel message to 'Repent and believe in the Gospel'.

[Diocesan Lent Resources](#)



ST THOMAS MORE CATHOLIC SCHOOL,  
CROFTDALE ROAD,  
BLAYDON,  
TYNE & WEAR,  
NE21 4BQ



☎ 0191 499 0111  
✉ [info@stthomasmore.org.uk](mailto:info@stthomasmore.org.uk)  
🌐 [www.stthomasmore.org.uk](http://www.stthomasmore.org.uk)

Bishop Wilkinson Catholic Education Trust is an exempt charity. It is a company limited by guarantee registered in England and Wales under company registration number 07890590. The registered office address is Bishop Wilkinson Catholic Education HQ, Barmston Court, Turbine Business Park, Nissan Way, Washington, SR5 3NY.

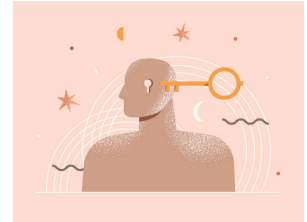


### Ski Trip to Austria

- I would like to wish the pupils and staff leaving today to go on the annual school Ski Trip a safe and pleasant journey.
- I am sure they will all have a great time and I am looking forward to hearing all about it!

### Spotlight on 'Philosophy Club' Extracurricular group for Key Stage 4 & 5 pupils

- It takes place every Tuesday at lunchtime in RE2.
- This club will make you think!
- Pupils discuss and debate big answers to big questions - it is a very popular club but new members are always welcome!
- See Mrs Mallie for further information.



### Year 9 Parents Evening

- Thank you for your attendance at last night's parents evening.
- You will receive a link via text message to complete a parental survey.
- We would appreciate as many responses as possible.



Please follow us on social media (**Facebook and Twitter STM\_CS\_Blaydon**) where we share regular updates from our school community.

As always if you have any queries please do not hesitate to get in touch using the pastoral email addresses below:

St Bernadette	St Catherine Laboure	St John Fisher	St Therese	Sixth Form
s_stbqueries@sttomasmore.org.uk	s_stclqueries@stthomasmore.org.uk	s_stjfqueries@sttomasmore.org.uk	s_sttqueries@stthomasmore.org.uk	s_6frmqueries@stthomasmore.org.uk

Yours sincerely,  
Mrs J Turner  
Head Teacher

ST THOMAS MORE CATHOLIC SCHOOL,  
CROFTDALE ROAD,  
BLAYDON,  
TYNE & WEAR,  
NE21 4BQ



0191 499 0111  
info@stthomasmore.org.uk  
www.stthomasmore.org.uk

Bishop Wilkinson Catholic Education Trust is an exempt charity. It is a company limited by guarantee registered in England and Wales under company registration number 07890590. The registered office address is Bishop Wilkinson Catholic Education HQ, Barmston Court, Turbine Business Park, Nissan Way, Washington, SR5 3NY.