



Friday 26th April, 2024

## Head Teacher's Weekly Update

Dear Families,

Thank you for your continued support, particularly with our pupils who have started their exams this week in subjects such as German, Art and Photography, or are undertaking work placements in Health and Social Care for example. Our pupils flourish and make progress with hard work, yes, but they excel with parental guidance and teacher support. Our school community reaches their potential when we all work together for the good of our pupils - a huge thank you to you all for that!

### Prayer Theme

**"I am the good shepherd. The good shepherd gives his life for the sheep" - John 10: 11 - 18**

- We have prayed together as a community:

*Dear God,*

*For the leaders and teachers in our school: May they emulate Your example of shepherding, guiding and nurturing us towards growth and understanding. Grant them wisdom and compassion in their roles. As we go about our days, may we carry the assurance that You are with us, protecting and guiding us through every trial and triumph*

*Amen*

### Personal Development Pop Up

- Every week at the school 'Pop Up' pupils can learn more about an event, topic, theme or issue linked to their Personal Development Curriculum.
- Pupils develop their understanding across 6 Key Concepts from Year 7 - Year 13 and the 'Pop Up' provides an extra opportunity outside of pastoral sessions and Wider Curriculum lessons for pupils to learn more.
- Pupils also get to vote on a question linked to that week's Key Concept.
- This week's topic is the Jewish festival of Passover from our Character, Culture & Morality Key Concept.
- Please encourage your child to visit the pop up one day after their lunch and to take part in our weekly vote.



ST THOMAS MORE CATHOLIC SCHOOL,  
CROFTDALE ROAD,  
BLAYDON,  
TYNE & WEAR,  
NE21 4BQ



☎ 0191 499 0111  
✉ [info@stthomasmore.org.uk](mailto:info@stthomasmore.org.uk)  
🌐 [www.stthomasmore.org.uk](http://www.stthomasmore.org.uk)

Bishop Wilkinson Catholic Education Trust is an exempt charity. It is a company limited by guarantee registered in England and Wales under company registration number 07890590. The registered office address is Bishop Wilkinson Catholic Education HQ, Barmston Court, Turbine Business Park, Nissan Way, Washington, SR5 3NY.



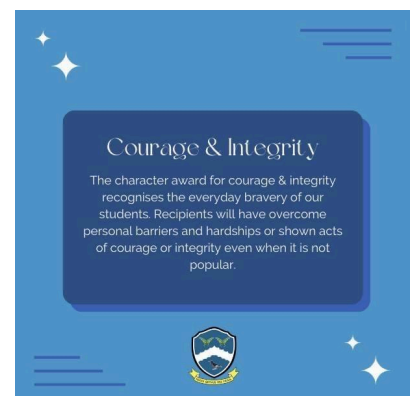
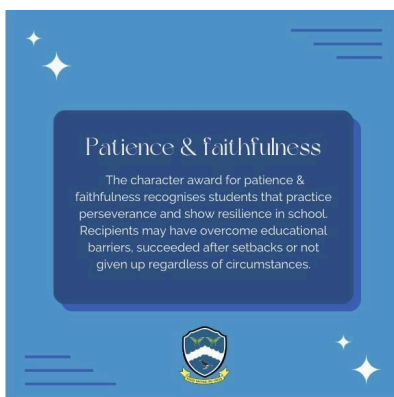
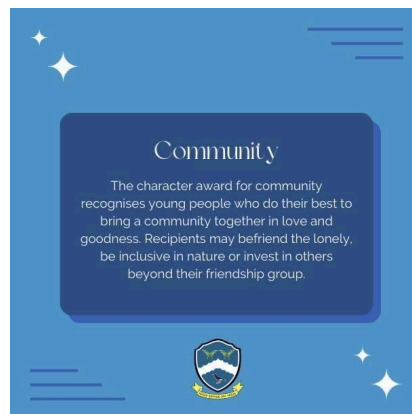
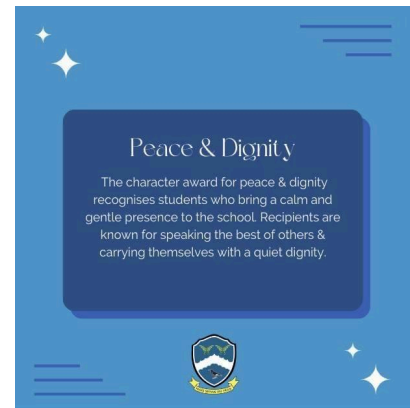
## Impact Ed survey

- Improving attendance is a shared goal not only at St Thomas More but across UK schools as a whole. We are using the ImpactEd platform to complete self-report surveys to help us understand some of the barriers to achieving higher attendance rates.
- This will help us put in place targeted interventions and support for our pupils.
- Pupils are invited to take part in a survey.
- Please find further details in this letter:

 [Impact Ed Parent Letter](#)

## Character Awards

- This year we have begun awarding pupil certificates based on an area of their Character linked to Gospel Values.
- These awards are in addition to Merit and 100% attendance awards.
- Our Year 11 pupils were the first to receive such awards during their celebration assembly.
- Pastoral tutors and leaders nominate pupils who have grown and developed as a person over the year in one of the following 5 areas.



ST THOMAS MORE CATHOLIC SCHOOL,  
CROFTDALE ROAD,  
BLAYDON,  
TYNE & WEAR,  
NE21 4BQ



☎ 0191 499 0111  
✉ [info@stthomasmore.org.uk](mailto:info@stthomasmore.org.uk)  
🌐 [www.stthomasmore.org.uk](http://www.stthomasmore.org.uk)

Bishop Wilkinson Catholic Education Trust is an exempt charity. It is a company limited by guarantee registered in England and Wales under company registration number 07890590. The registered office address is Bishop Wilkinson Catholic Education HQ, Barmston Court, Turbine Business Park, Nissan Way, Washington, SR5 3NY.



### Year 12 Higher Education Information Evening - 30/04/24

- We would like to invite parents/carers of pupils in Year 12 to an information evening linked to preparing pupils for Higher Education.
- This will be held on Tuesday 30th April at 5pm in the Sixth Form Centre.
- The evening is aimed at parents/carers and further information can be found in the letter: [Year 12 Parents Information Evening](#)

### Year 12 Parent Evening

- Thank you if you were able to attend your child's parent's evening last night.
- Please look out for a text with a link to a parent/carer survey.
- We appreciate your comments and look forward to hearing from you.



Please follow us on social media (**Facebook and Twitter STM\_CS\_Blaydon**) where we share regular updates from our school community.

As always if you have any queries please do not hesitate to get in touch using the pastoral email addresses below:

| St Bernadette                   | St Catherine Laboure              | St John Fisher                   | St Therese                       | Sixth Form                        |
|---------------------------------|-----------------------------------|----------------------------------|----------------------------------|-----------------------------------|
| s_stbqueries@sttomasmore.org.uk | s_stclqueries@stthomasmore.org.uk | s_stjfqueries@sttomasmore.org.uk | s_sttqueries@stthomasmore.org.uk | s_6frmqueries@stthomasmore.org.uk |

Yours sincerely,

Mrs J Turner  
Head Teacher